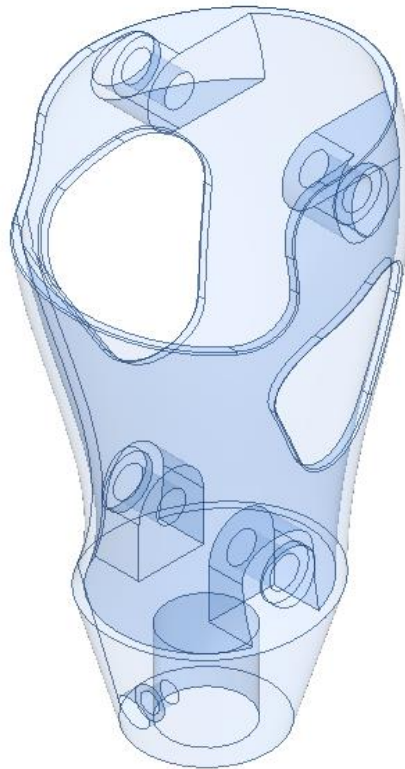




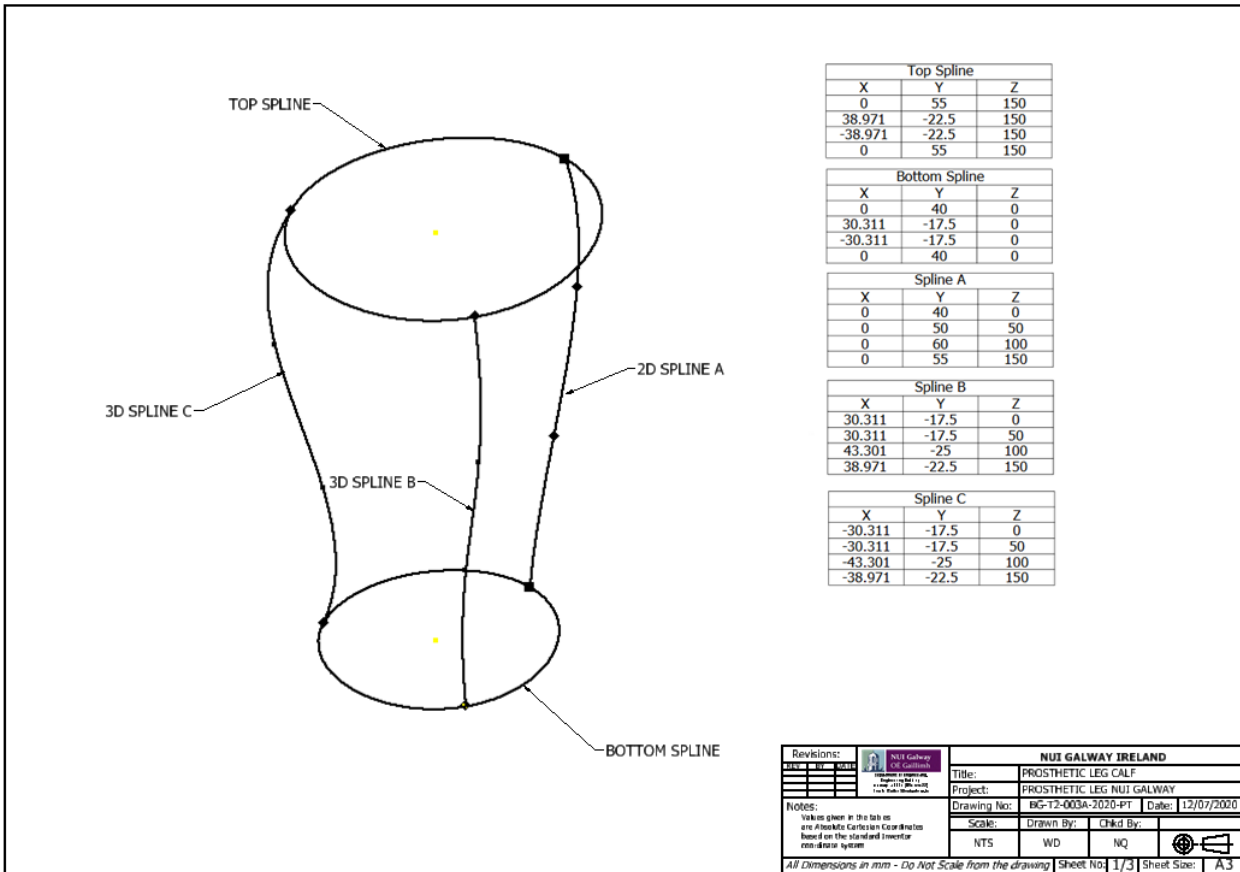
Tutorial 2



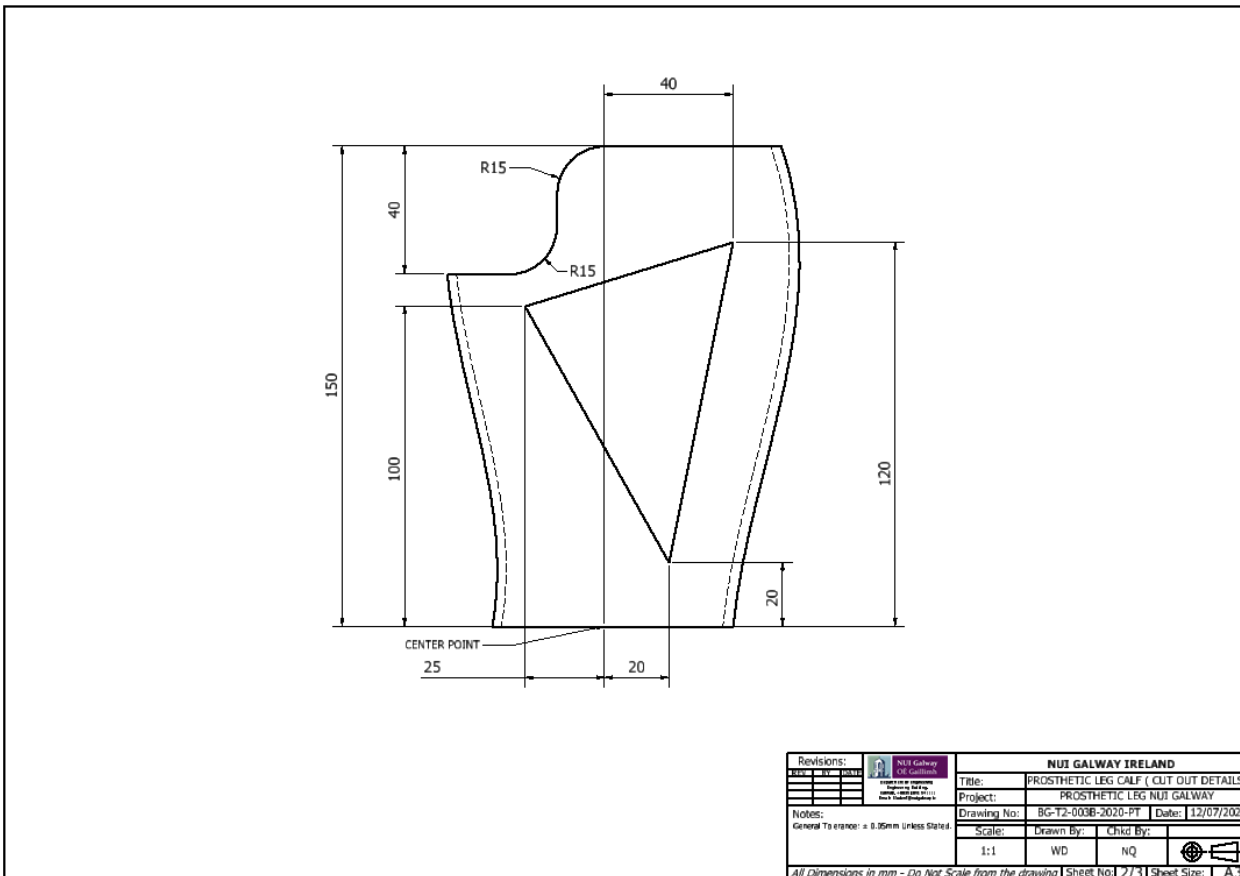
Instructions:

- Model the Prosthetic leg calf based on the details given in the drawings.
- Save the completed model as Tutorial 2.ipt
- This part file will also be used in Tutorial 3 and the Assignments.
- Save as Tutorial 2.ipt for handing in.

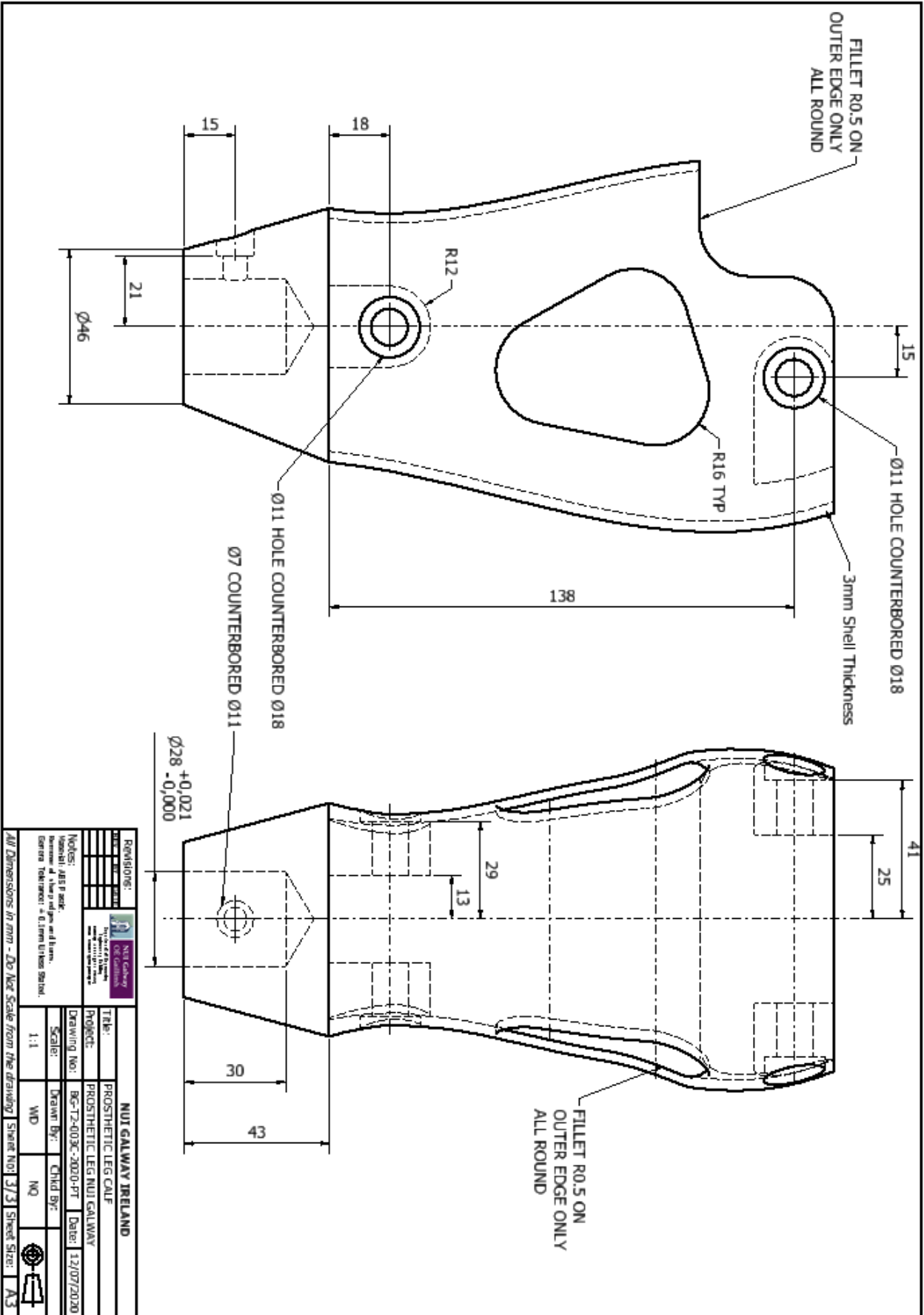
Drawing A: Complex Loft



Drawing B: Cut outs



Drawing C: Calf Details



		NUI GALWAY IRELAND	
Revisions: No. Date Description 1 2 3	Title: PROSTHETIC LEG CALF Project: PROSTHETIC LEG NUI GALWAY Drawing No: BG-172-003C-2020-PT Scale: 1:1 Date: 12/07/2020	Drawn By: Child By: MD NQ	Sheet No: 3/3 Sheet Size: A3

All Dimensions in mm - Do Not Scale from the drawing